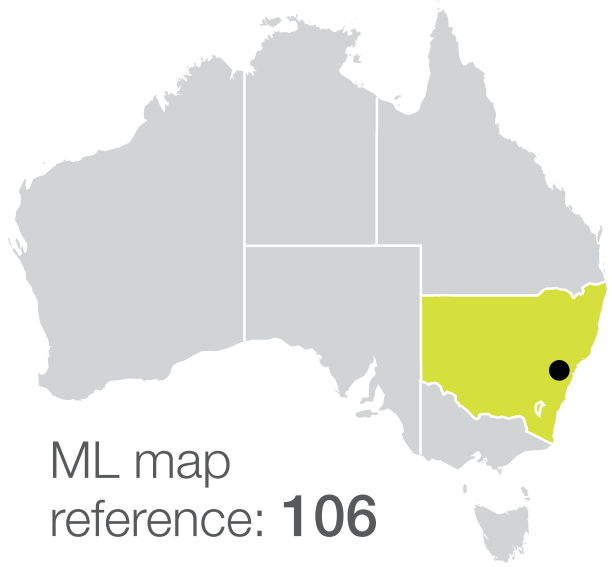
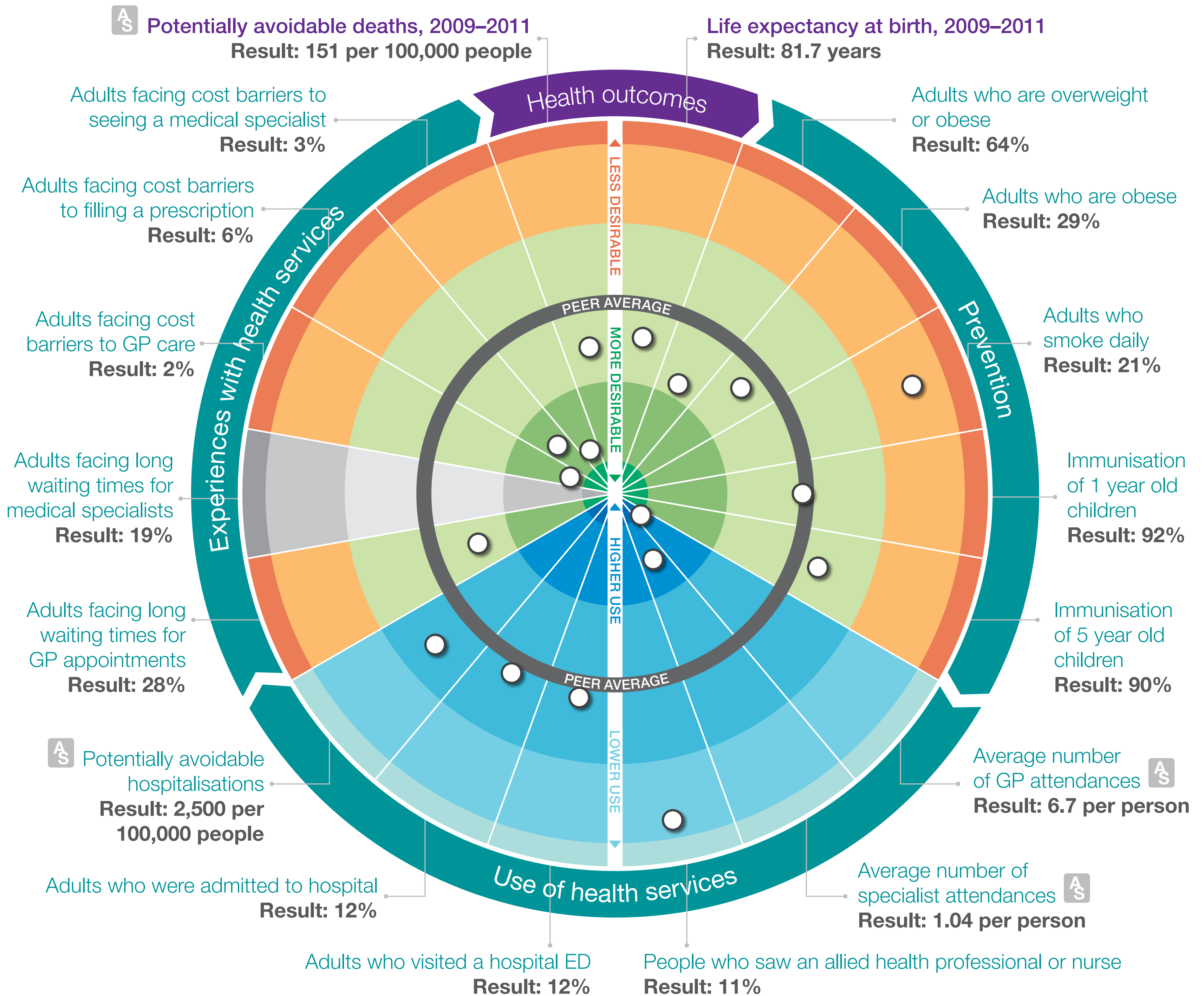


How does your local area measure up?



Nepean-Blue Mountains

Medicare Local catchment results relative to Regional 1 peer group results, 2011–12



Medicare Local catchment profile

Total population: 351,237	Total land area: 9,122km²
Indigenous population: 3.2%	Population split: 49.7% male, 50.3% female
Age proportions: 25% (0–17 years) 63% (18–64 years) 12% (65+ years)	Socioeconomic status: 26% (low) 47% (medium) 27% (high)

Medicare Local catchment legend

- Medicare Local results
- Age standardised data
- NP** Not publishable
- These data are not available for publication for this Medicare Local catchment

Source: Healthy Communities: Avoidable deaths and life expectancies in 2009–2011